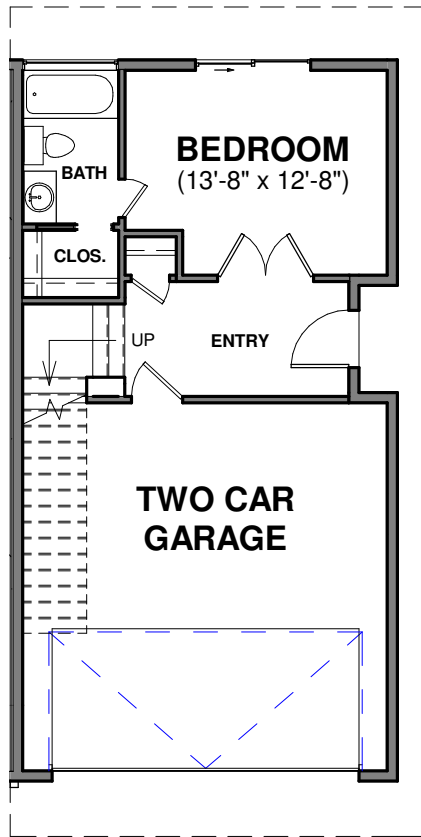
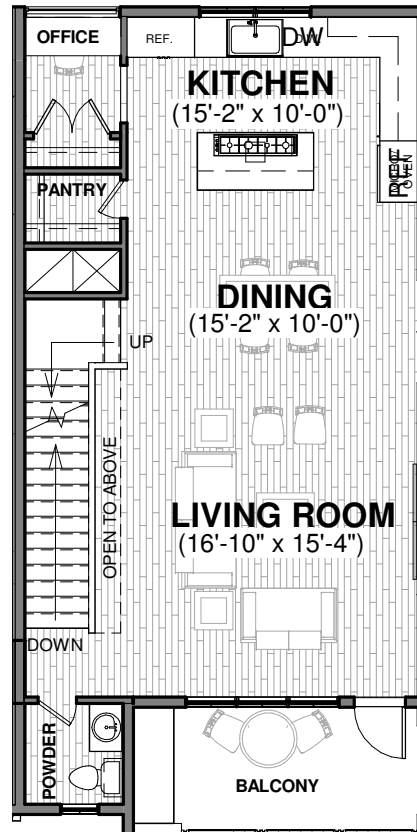


MIDDLE STREET

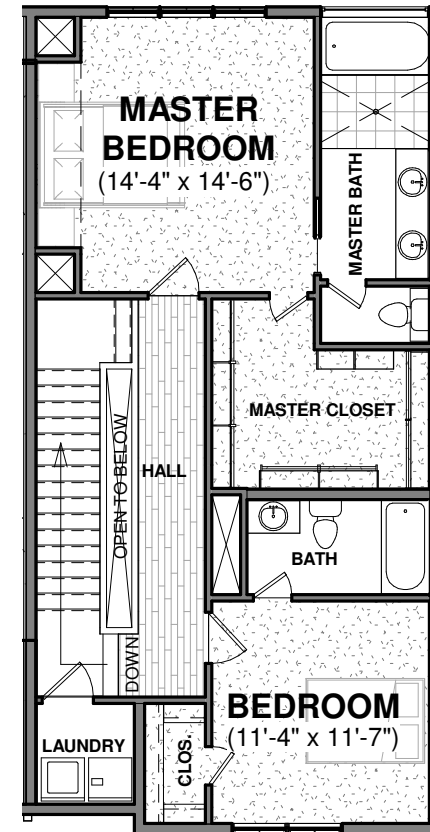
LOFTS ON THE BAYOU



FIRST FLOOR
326 SF



SECOND FLOOR
818 SF



THIRD FLOOR
901 SF

MIDDLE STREET- LIVE OAK PLAN

LIVING AREA: 2,045 SF

NOTE:
PLAN IS SUBJECT TO CHANGE WITHOUT NOTICE.
SQUARE FOOTAGE OF LIVING AREA (APPROX.)

urbanlofts
townhomes

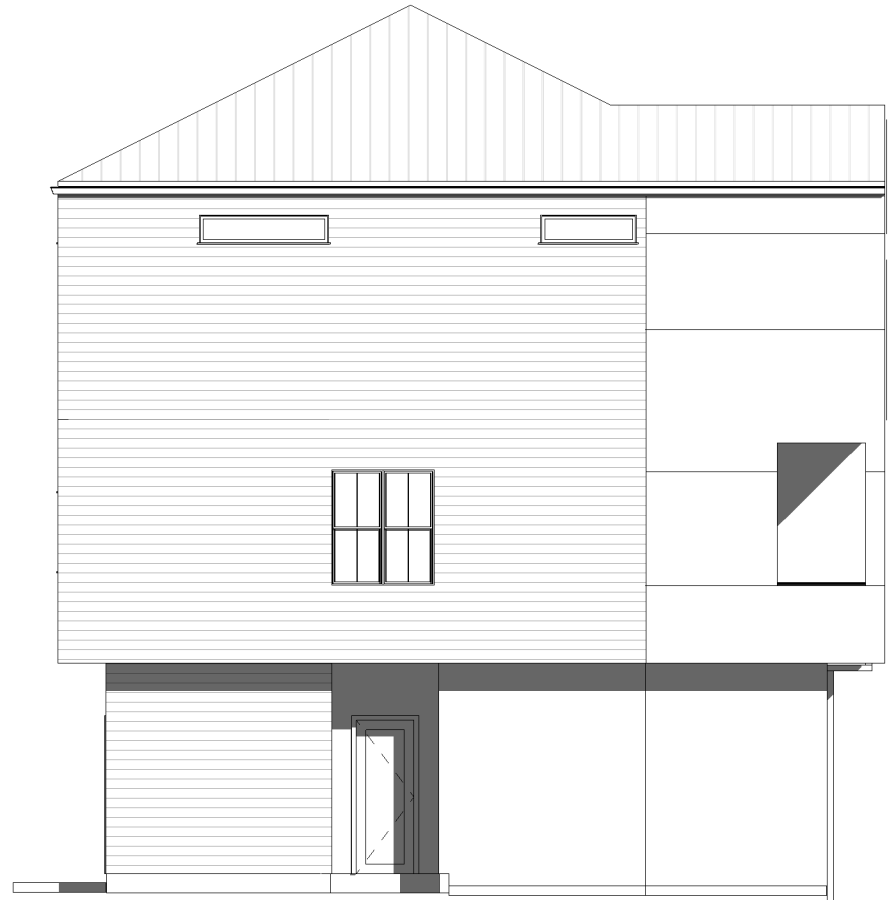
COPYRIGHT 2018
L. DAVIS, INC.

MIDDLE STREET

LOFTS ON THE BAYOU



FRONT ELEVATION



SIDE ELEVATION

MIDDLE STREET- LIVE OAK PLAN

LIVING AREA: 2,045 SF

NOTE:
PLAN IS SUBJECT TO CHANGE WITHOUT NOTICE.
SQUARE FOOTAGE OF LIVING AREA (APPROX.)

urbanlofts
townhomes

COPYRIGHT 2018
L. DAVIS, INC.

MIDDLE STREET

LOFTS ON THE BAYOU



BUILDING PERSPECTIVE

MIDDLE STREET- LIVE OAK PLAN

LIVING AREA: 2,045 SF

NOTE:
PLAN IS SUBJECT TO CHANGE WITHOUT NOTICE.
SQUARE FOOTAGE OF LIVING AREA (APPROX.)

urbanlofts
townhomes

COPYRIGHT 2018
L. DAVIS, INC.