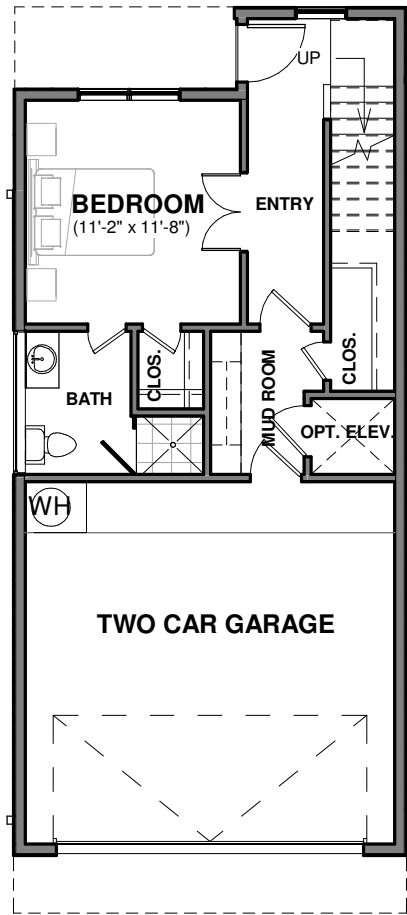
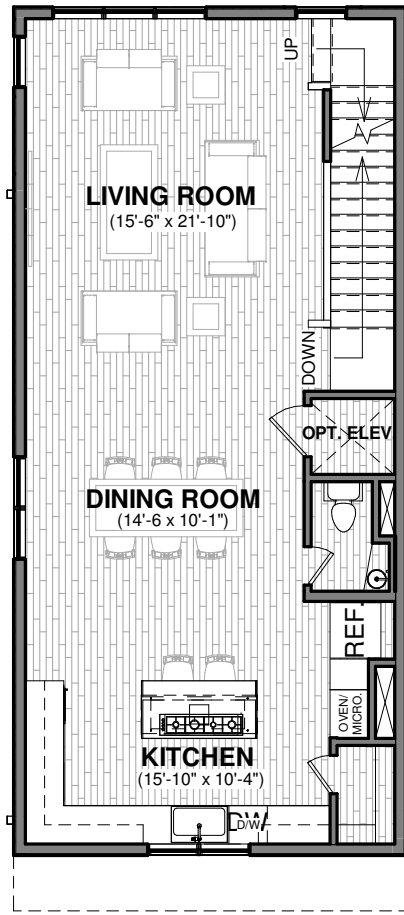


UPTOWN NORTH

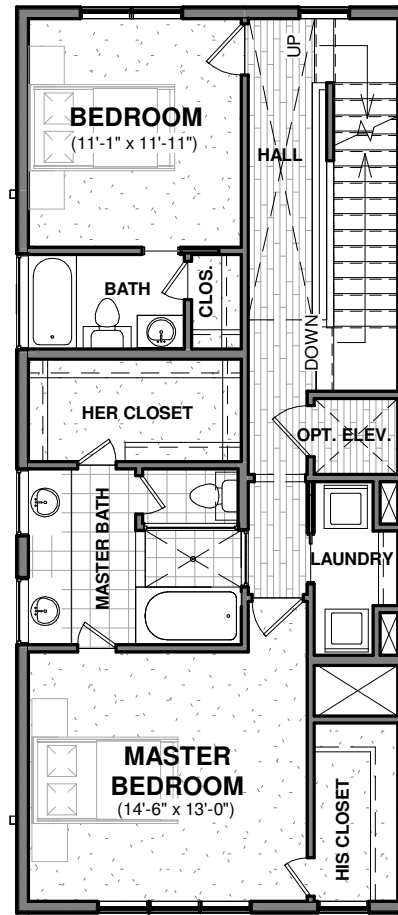
1400 NORTH POST OAK



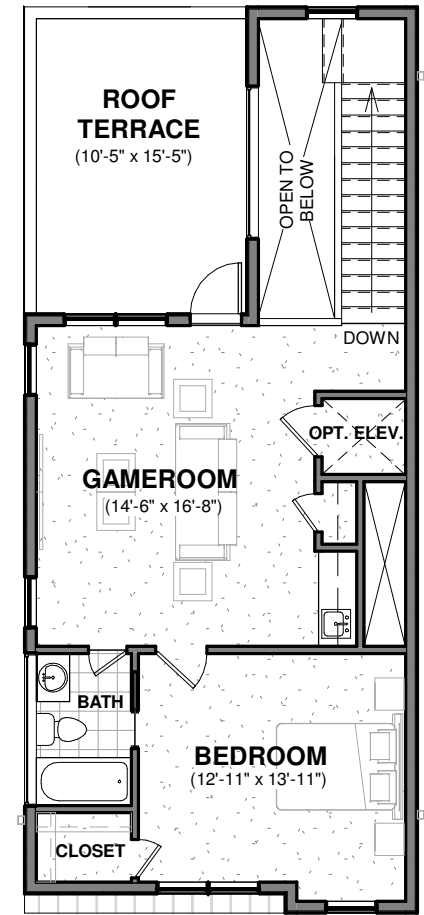
FIRST FLOOR
415 SF



SECOND FLOOR
906 SF



THIRD FLOOR
963 SF



FOURTH FLOOR
694 SF

Walk Park B10
5850 E Post Oak

LIVING AREA: 2,978 SF

NOTE:
PLAN IS SUBJECT TO CHANGE WITHOUT NOTICE.
SQUARE FOOTAGE OF LIVING AREA (APPROX.)

urbanlofts
townhomes

COPYRIGHT 2016
L. DAVIS, INC.

UPTOWN NORTH

1400 NORTH POST OAK



Walk Park B10
5850 E Post Oak

LIVING AREA: 3,052 SF

NOTE:
PLAN IS SUBJECT TO CHANGE WITHOUT NOTICE.
SQUARE FOOTAGE OF LIVING AREA (APPROX.)

urbanlofts
townhomes

COPYRIGHT 2016
L. DAVIS, INC.