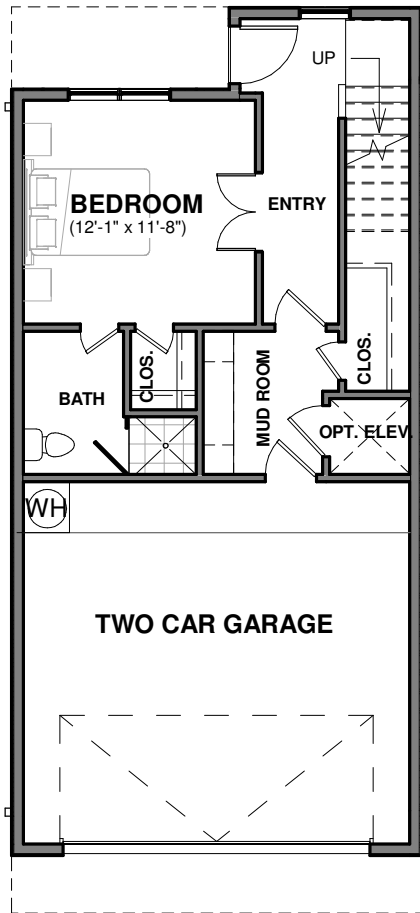
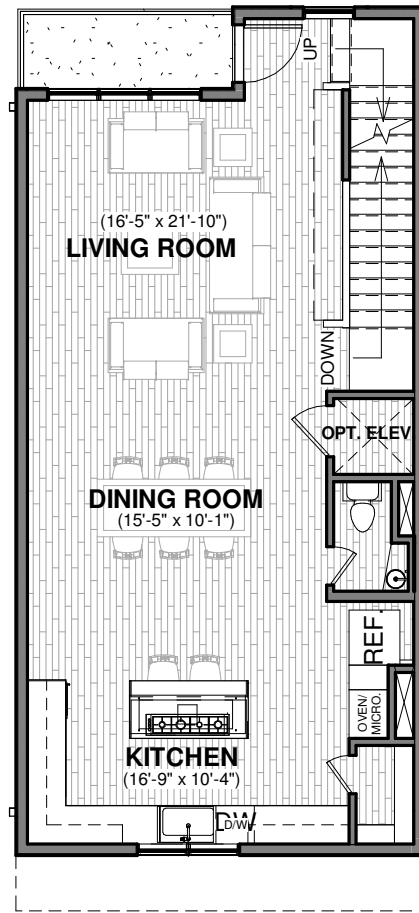


# UPTOWN NORTH

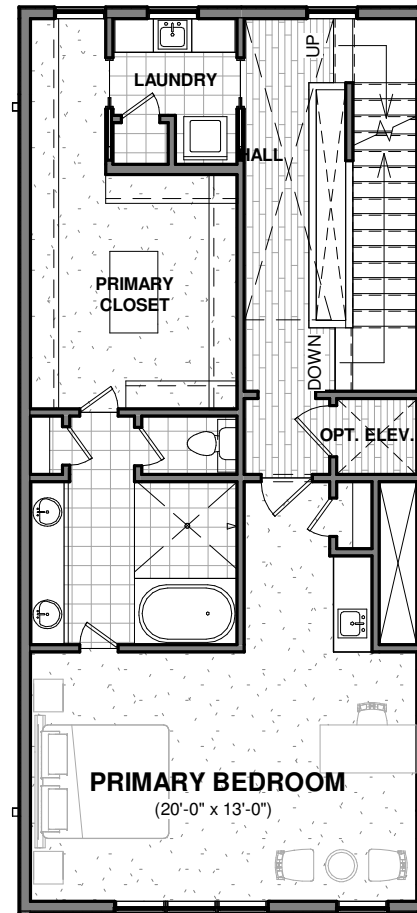
1400 NORTH POST OAK



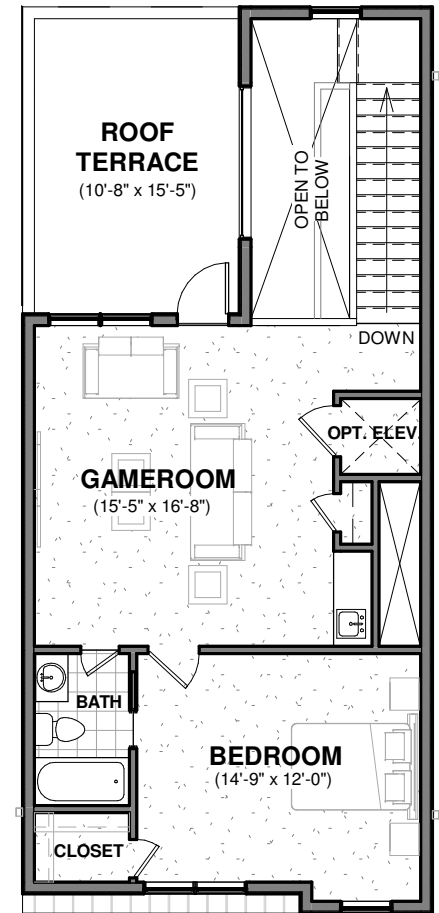
FIRST FLOOR  
430 SF



SECOND FLOOR  
932 SF



THIRD FLOOR  
990 SF



FOURTH FLOOR  
734 SF

Walk Park - Plan B

LIVING AREA: 3,086 SF

NOTE:  
PLAN IS SUBJECT TO CHANGE WITHOUT NOTICE.  
SQUARE FOOTAGE OF LIVING AREA (APPROX.)

urbanlofts  
townhomes

COPYRIGHT 2021  
L. DAVIS, INC.

# UPTOWN NORTH

1400 NORTH POST OAK



**Walk Park - Plan B**

**LIVING AREA: 3,086 SF**

NOTE:  
PLAN IS SUBJECT TO CHANGE WITHOUT NOTICE.  
SQUARE FOOTAGE OF LIVING AREA (APPROX.)

**urbanlofts**  
**townhomes**

COPYRIGHT 2021  
L. DAVIS, INC.